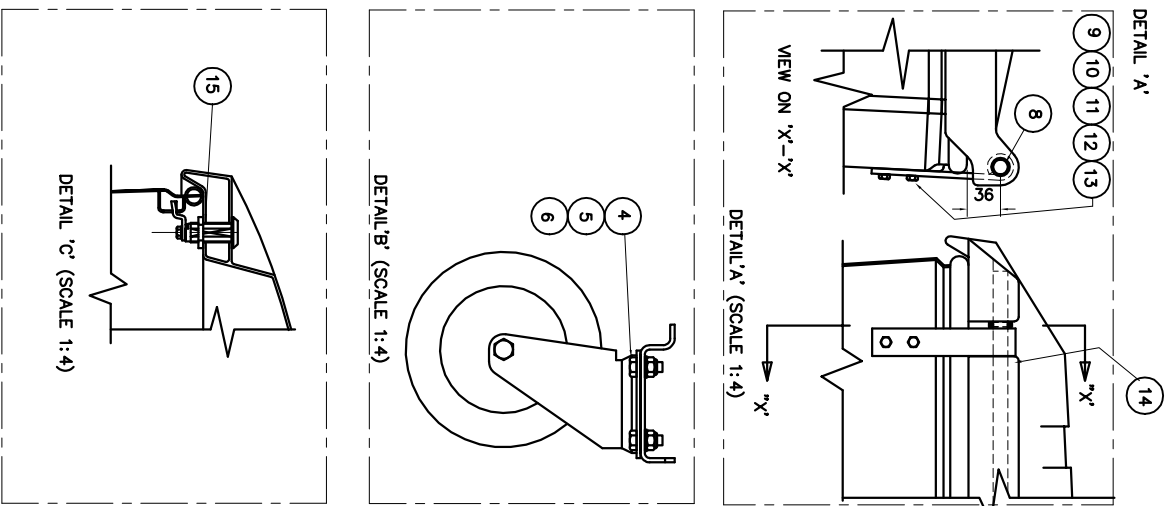
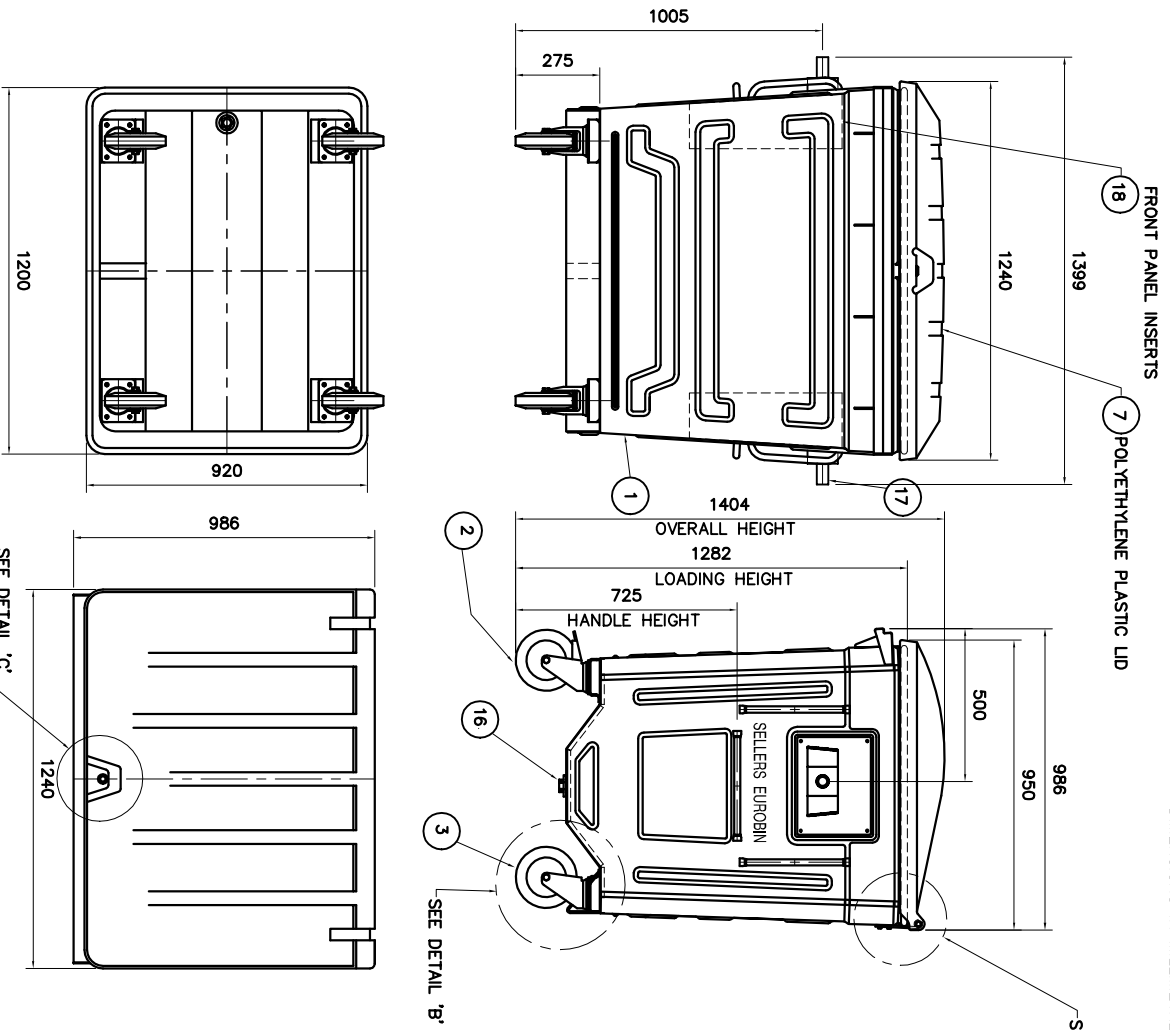


DIMENSIONS IN MILLIMETRES EXCEPT WHERE NOTED



ITEM No.	DESCRIPTION	DRG/PART No.	QTY
1	WELDED ASSEMBLY	1100SA51A	1
2	CASTOR FRONT-SW&BRKD	525206	2
3	CASTOR REAR - SWIVEL	524406	2
4	M10 X 25 HEX HD BOLT	ZINC PLATED	16
5	M10 PLAIN WASHER	ZINC PLATED	16
6	M10 LOCKNUT	ZINC PLATED	16
7	LID (CONTAINER COMPONENTS)	ME4937D	1
8	HINGE BAR	1100D705A	1
9	HINGE	1100D730A	2
10	HINGE BACKING PLATE	1100D719A	2
11	M6 X 25LG HEX. HD. SCREW	ZINC PLATED	4
12	M6 PLAIN WASHER	ZINC PLATED	4
13	M6 LOCKNUT	ZINC PLATED	4
14	SELOC PIN 5 DIA X 26LG.	NATURAL	2
15	LID LOCK SUB-ASSY	1100SA52	1
16	DRAIN PLUG	PLASTIC	1
17	DIN LIFT SUB-ASSEMBLY	1100SA36A	2
18	FRONT PANEL INSERTS	1100D7124A	2

SELLERS		ENGINEERING LIMITED
CHADDEVERTON . OLDHAM		LANCASHIRE
REV.	DATE	INITIAL
FOR	1	2
FOR	3	4
FOR	5	6
FOR	7	8
FOR	9	10

This drawing is the property of Sellers Engineering Ltd and must not be copied, reproduced or used for any purpose whatsoever, except that for which it is supplied. If it is used for any other purpose without the written consent of Sellers Engineering Ltd, the user agrees to indemnify and hold Sellers Engineering Ltd harmless from all claims, damages, costs and expenses, including reasonable attorneys' fees, which may be incurred by Sellers Engineering Ltd. We reserve the right to alter this drawing without notice.

QTY:	ORDER No. :	DRAWING NAME :
SCALE 1: 12		EUROBIN 1100 - MARK 2 - WITH COMBLIFT & DINLIFTS GENERAL ASSEMBLY
PROJECTION	CHECKED A.K.	DATE 20/07/07
		CLIENT :
		DRG. No. : 1100GA50
		SHT REV
		A 0

F:\EUROBIN\1100GA50A